



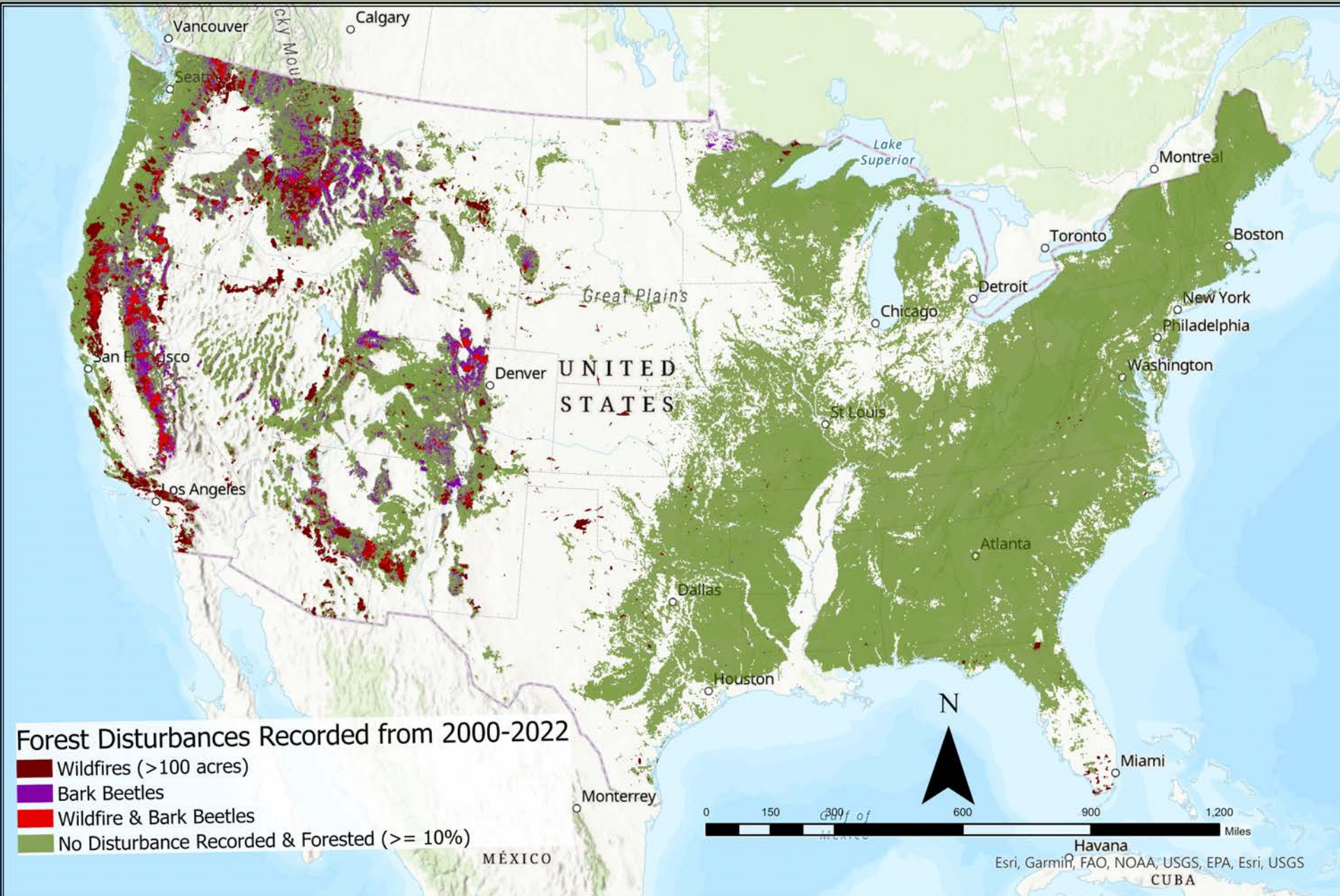
# Impact of Multidecadal Wet and Dry Climate Cycles on Forest Disturbances across Conterminous U.S., 2000-2022



Joel M Egan  
Forest Health Monitoring Coordinator  
U.S. Forest Service  
State, Private and Tribal Forestry  
Forest Health Protection

Contact:  
[joel.egan@usda.gov](mailto:joel.egan@usda.gov)  
406-552-5662

Forest with a high density of mature, commercial-size trees (>100 ft tall) will be targeted for beetles, and the resulting loss of trees will be exacerbated by drought conditions and a combination of disturbances. Densification and fire exclusion compounded the disturbance amplified dry cycle in 2000.



# U.S. Forest Service

## State, Private and Tribal Forestry

### Multiple Programs for Funding and Technical Assistance

#### LANDOWNER ASSISTANCE PROGRAM-

**Contact:** Jen Hensiek, Forest Stewardship Prog Mgr., (406) 529-8159, [jennifer.hensiek@usda.gov](mailto:jennifer.hensiek@usda.gov)

#### COOPERATIVE FIRE PROGRAM

**Contact:** Chris Johnson, Coop. Fire Prog. Mgr., (406)529-7751  
[Christopher.Johnson5@usda.gov](mailto:Christopher.Johnson5@usda.gov)

Grant Program	Landscape Scale Restoration	Landowner Assistance	Revegetation	Community Wildfire Defense
<b>Intent:</b>	Promotes collaborative, science-based restoration of priority forest landscapes for a variety of objectives e.g., wildfire risk, water quality and function, and fish & wildlife habitats.	IRA funding to support participation of underserved and small acreage forest landowners in emerging markets for climate mitigation and forest resilience	Technical assistance and BIL funds to modernize existing state and tribal tree nurseries and tree orchard facilities	BIL funding to help at-risk local communities and <u>Tribes</u> plan and reduce the risk against wildfire. Community Wildfire Protection Plan production/revision and implementation are eligible projects.
<b>Request for Proposal Open Date:</b>	West-wide closes Nov. 17 <sup>th</sup> Tribal closes Dec. 15 <sup>th</sup>	Various dates depending on amount requested, see <a href="https://www.grants.gov">grants.gov</a>	Annual request for information, however technical assistance and site visit is first step in application	Open until October 31, 2023 Available annually thru October 2026
<b>Eligible Applicants:</b>	<b>States</b> apply via <a href="https://www.forestrygrants.org">Western LSR (forestrygrants.org)</a> & <b>Tribal governments</b> apply via <a href="https://www.grants.gov">GRANTS.GOV</a> Search for USDA-FS-2024-LSR-NATIONAL-TRIBAL	State, local, tribal governments, educational institutions, non-profit entities, and for-profit entities <b>GRANTS.GOV</b> Search for USDA-FS-2023-IRA-FLS-01	State and tribal governments with existing tree nurseries	Non-profits; local, state, and tribal governments; businesses, companies, corporations (for profit); institutions of higher education; and special purpose districts (public utility districts, fire districts, conservation districts, school districts, and ports.) <a href="https://www.fs.usda.gov/managing-land/fire/grants">https://www.fs.usda.gov/managing-land/fire/grants</a>
<b>Individual Award Ceiling:</b>	\$50,000-300,000 annually	Track A: \$2-\$25 million Track B: \$2 million Track C: subaward program for \$5-\$50 million	TBD for FY '24	<ul style="list-style-type: none"> <li>Up to \$250k for CWPP plan production/revision</li> <li>Up to \$10M for implementation projects</li> </ul>

**\*BIL=Bipartisan Infrastructure Law \*IRA=Inflation Reduction Act**

Additional State, Private and Tribal Forestry programs that provide financial and technical assistance:

- **Urban and Community Forestry** program provides grants and new funding opportunities through BIL/IRA focused on Justice40 were recently announced:  
<https://www.fs.usda.gov/managing-land/urban-forests/ucf>
  - o **Contact** Jacob Biar, Asst Urban and Community Forestry Prog. Mgr. (208) 449-8778 [jacob.biar@usda.gov](mailto:jacob.biar@usda.gov) or find a contact at: <https://www.fs.usda.gov/about-agency/contact-us/urban-and-community-forestry>
- **Forest Health Protection** program can support Tribal forestry through technical information, emergency pest suppression funding, and special project funding:
  - o Special Project Grant Programs related to Forest Health: <https://www.fs.usda.gov/foresthealth/working-with-us/index.shtml>
  - o **Contact:** Your local FHP field office for further information: <https://www.fs.usda.gov/foresthealth/contact-us/regional-contacts.shtml>