



# NATIONAL DROUGHT MITIGATION CENTER

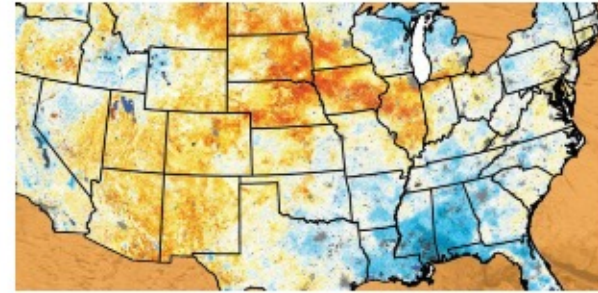
UNIVERSITY OF NEBRASKA



Education



Planning



Monitoring

DR. CODY KNUTSON, DROUGHT PLANNING COORDINATOR



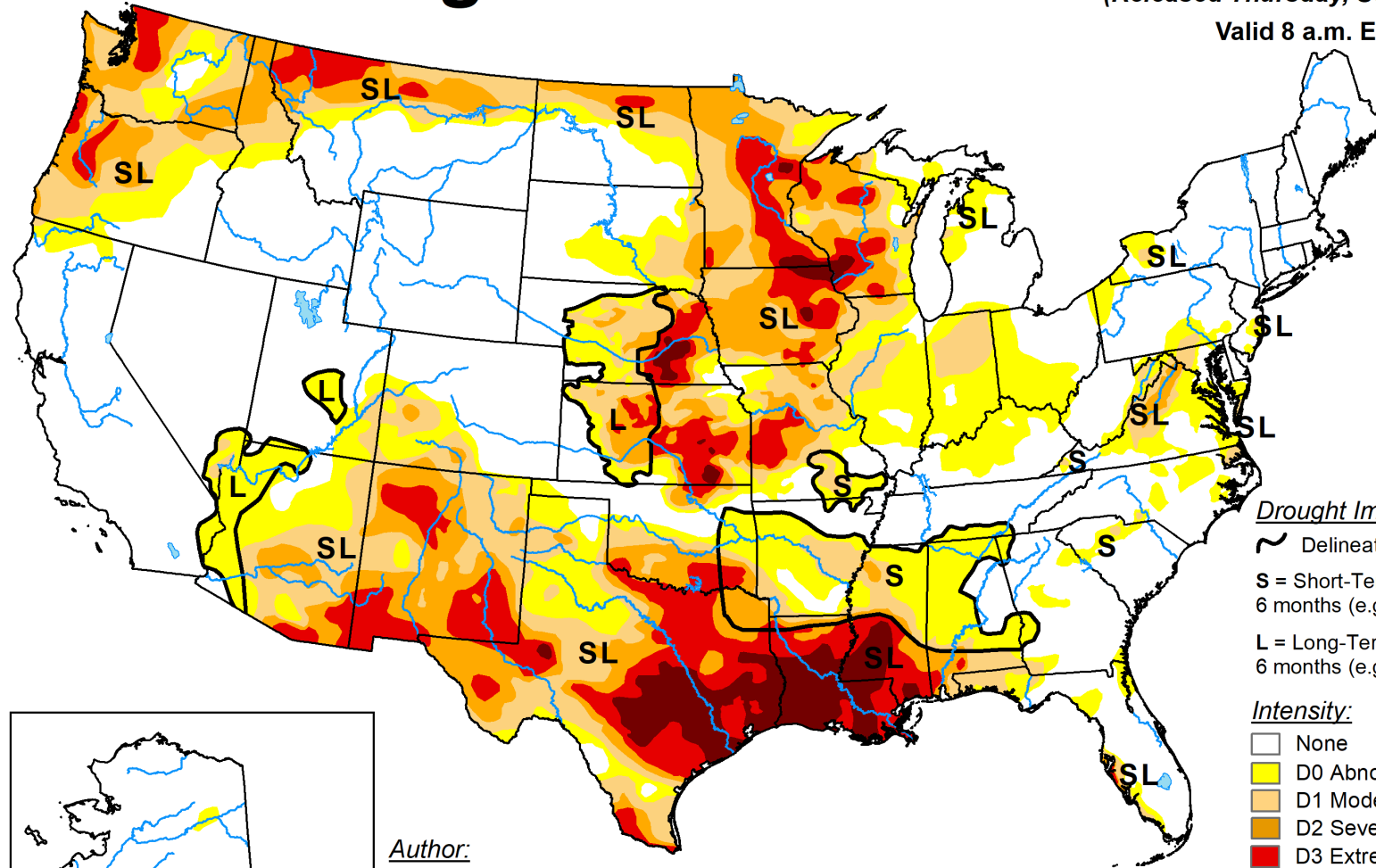
[drought.unl.edu](http://drought.unl.edu)



# U.S. Drought Monitor

September 19, 2023  
(Released Thursday, Sep. 21, 2023)

Valid 8 a.m. EDT

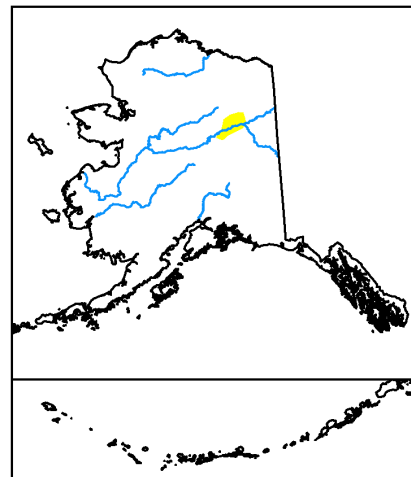


**Drought Impact Types:**

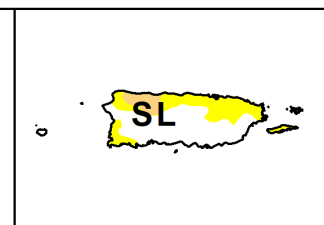
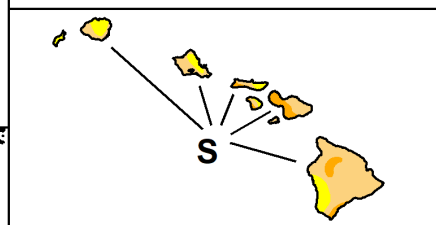
- ~ Delineates dominant impacts
- S = Short-Term, typically less than 6 months (e.g. agriculture, grasslands)
- L = Long-Term, typically greater than 6 months (e.g. hydrology, ecology)

**Intensity:**

- None
- D0 Abnormally Dry
- D1 Moderate Drought
- D2 Severe Drought
- D3 Extreme Drought
- D4 Exceptional Drought



Author:  
Richard Heim  
NCEI/NOAA



The Drought Monitor focuses on broad-scale conditions. Local conditions may vary. For more information on the Drought Monitor, go to <https://droughtmonitor.unl.edu/About.aspx>



[droughtmonitor.unl.edu](https://droughtmonitor.unl.edu)

# Wind River Drought Vulnerability Assessment



[drought.unl.edu](http://drought.unl.edu)

