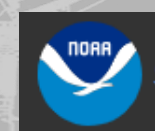
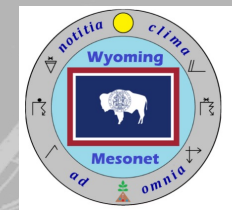
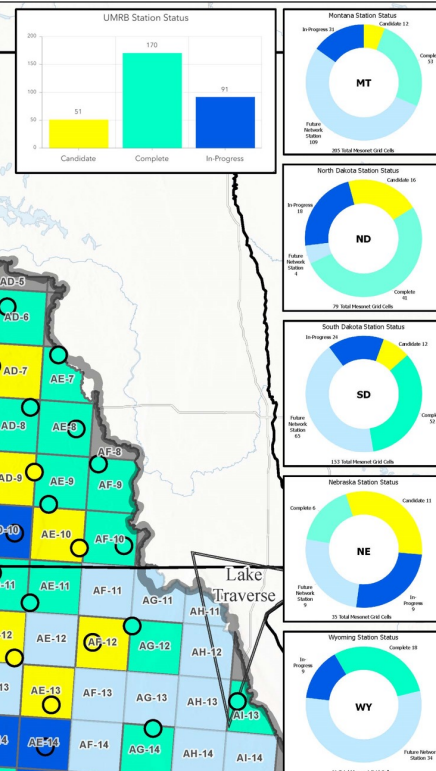
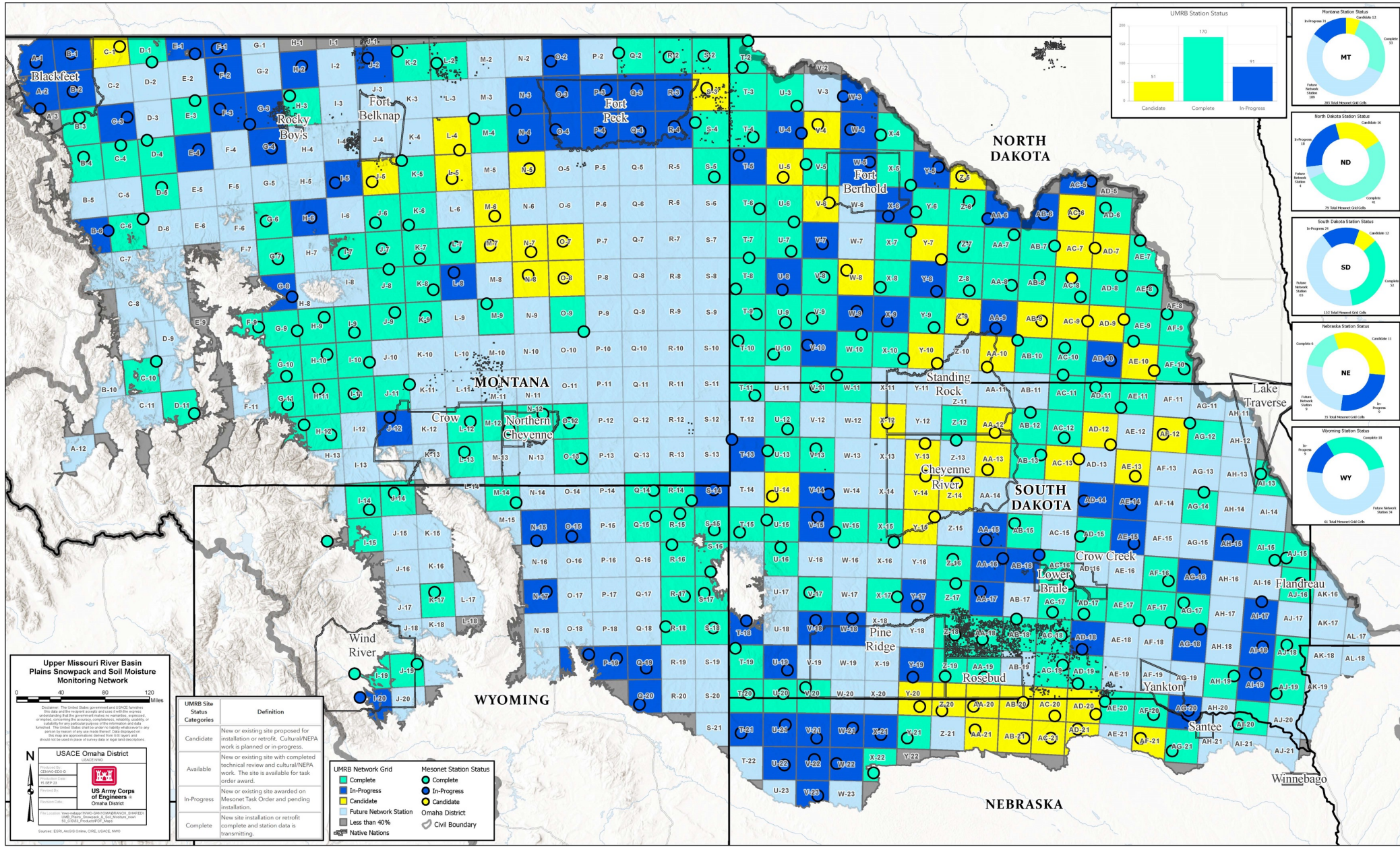




US Army Corps of Engineers
Omaha District

Upper Missouri River Basin Plains Snowpack and Soil Moisture Monitoring Network

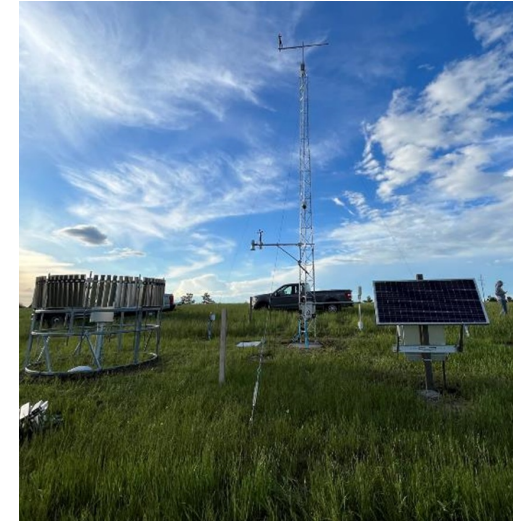


PROGRAM BACKGROUND AND IMPLEMENTATION

- 2011 Floods → Needs Assessment
- Legislation
- Implementation – State Mesonets (MT, ND, NE, SD, WY); USACE – Lead Agency; CIRE – Coordination; NRCS – Soil characterization; NOAA – Data sharing

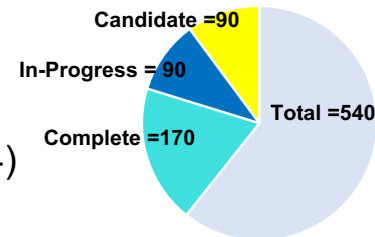
STATION INFORMATION

- Wind
- Air Temperature
- Humidity
- Solar radiation
- Precipitation
- Snow Depth
- Pressure
- Bare soil temperature
- Soil moisture and soil temp at 5 depths



STATUS

- 3 years into 7-year project
- 170 stations out of 540 complete
- 90 to be installed next field season (2024)
- **Status on Tribal Lands:**
 - # of grid cells with tribal ownership: **~170**
 - # of stations currently Complete/In-progress/Candidate on tribal lands: **33**
 - # of cells remaining with potential to be sited on tribal owned lands: **43**



DATA

- **Data implications:** *quantify, predict & manage for drought, landscape mgmt., flood prediction and reservoir mgmt., climate shifts, water use, crop and forage.*
- Data is available to all federal agencies and federally funded projects via National Mesonet Program.
- Currently available on USACE – NWD website
- Mesonet websites – Daily data and free data for station hosts.