



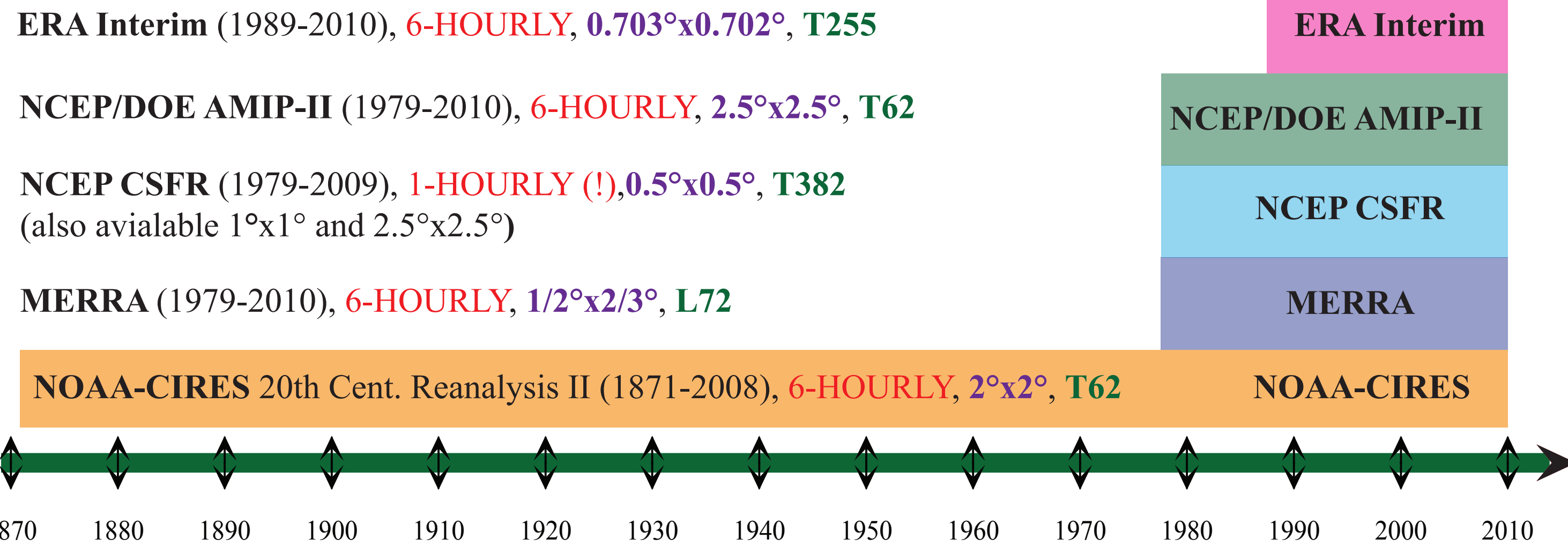
CYCLONE ACTIVITY IN 20th CENT REAN COMPARING TO OTHER MODERN REANALYSES

Sea Air Interaction and Climate Laboratory,
P.P. Shirshov Institute of Oceanology, Moscow

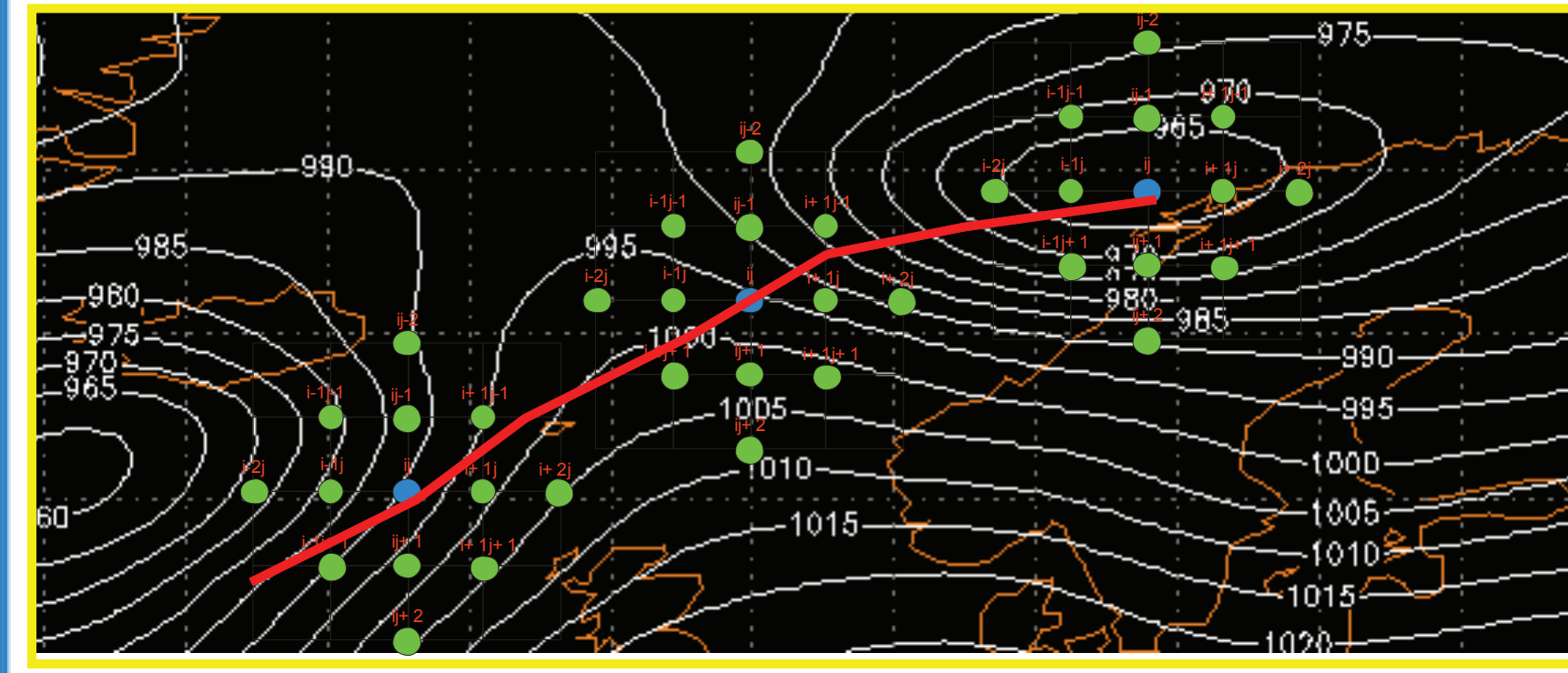
Natalia Tilina and Sergey K. Gulev
tilina@sail.msk.ru

DATA

SEA LEVEL PRESSURE FIELDS FROM REANALYSES:



CYCLONE TRACKING

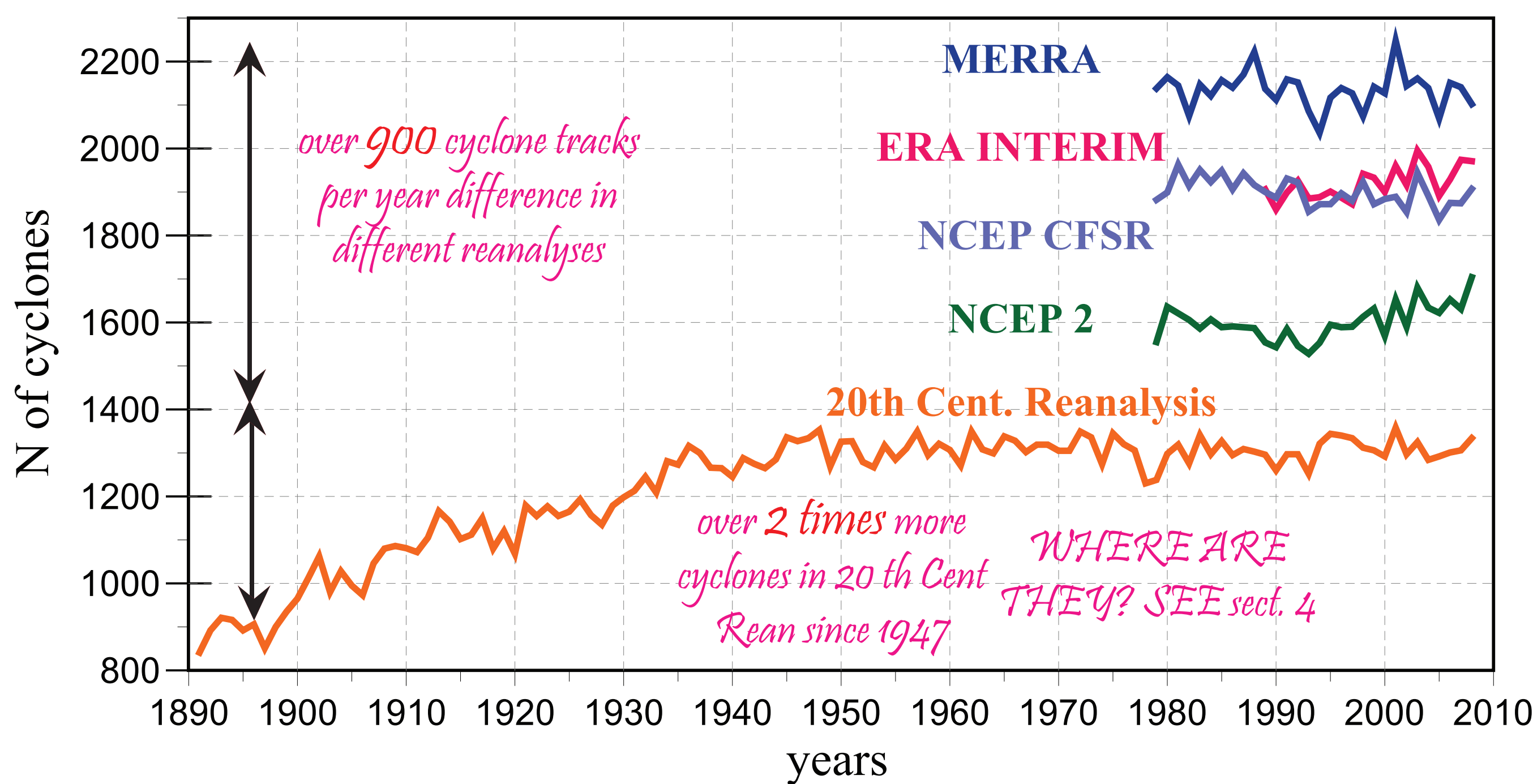


Identification of centers and building the trajectories (Zolina and Gulev, 2002)

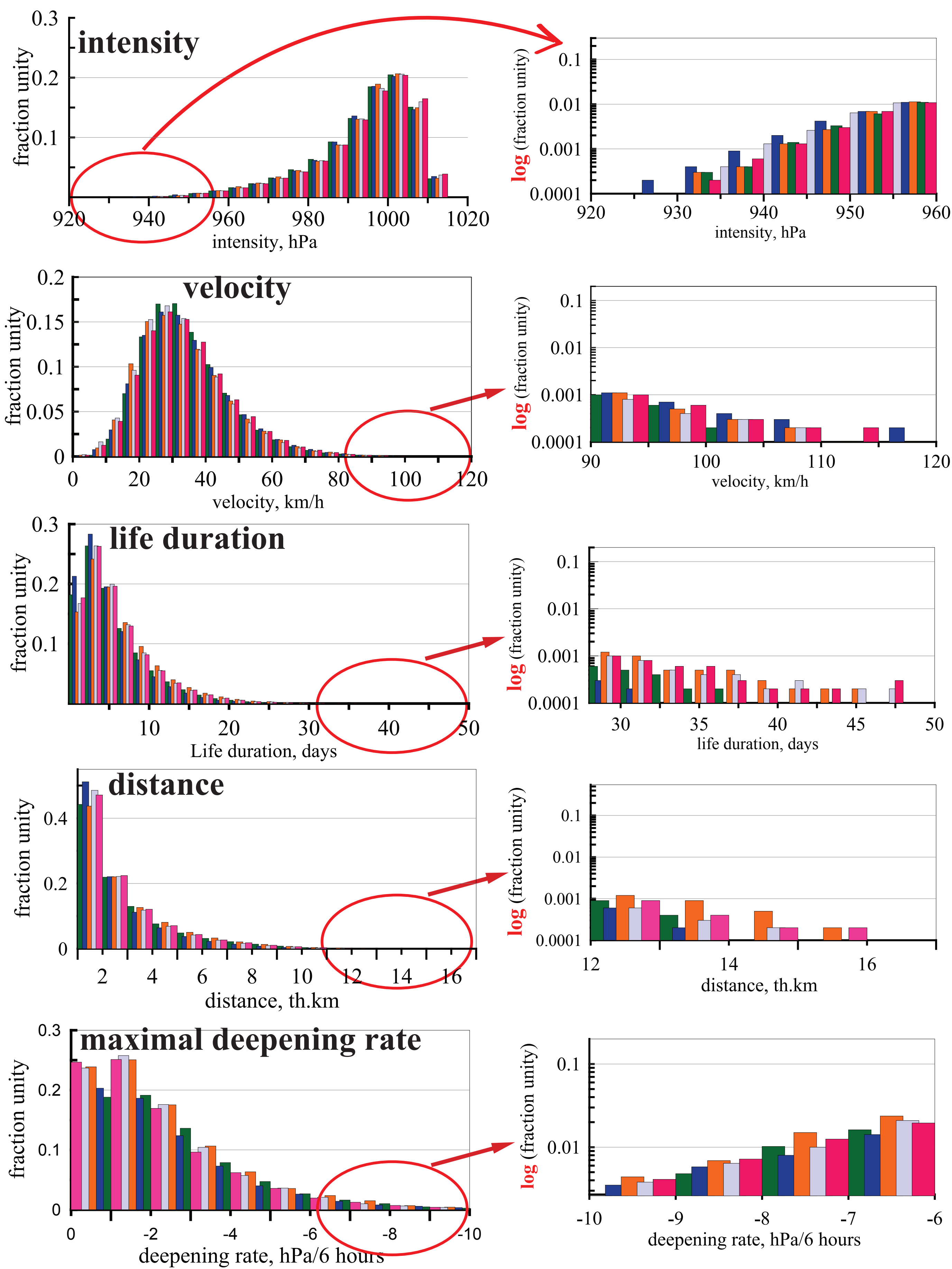
The cyclone identification and tracking algorithm consists essentially on the detection of minima in sea level pressure fields that are eligible for possible storm centres, and on their further tracking by looking for the nearest neighbour in consecutive charts.

RESULTS. NORTHERN HEMISPHERE.

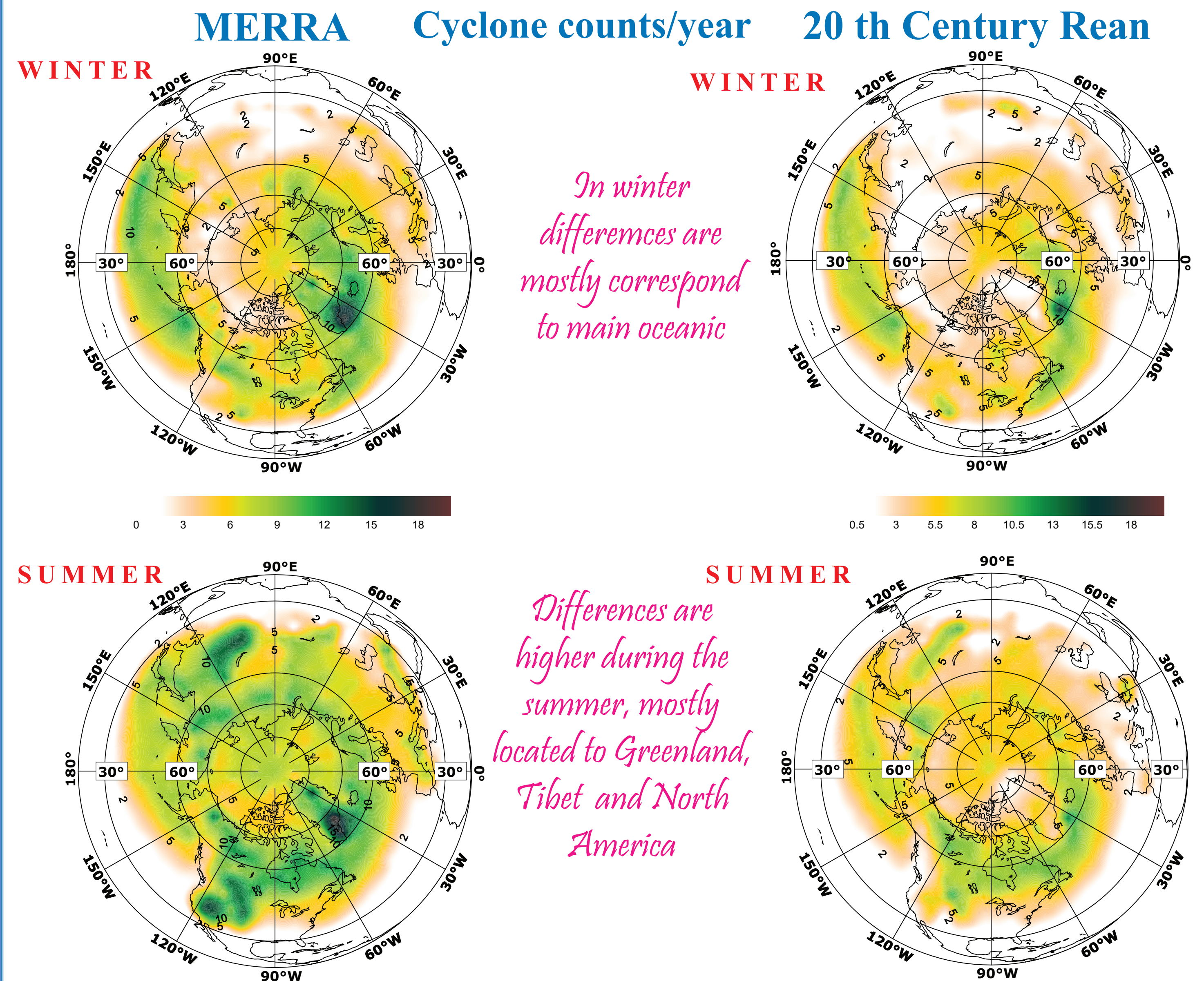
1. TOTAL NUMBER OF CYCLONE TRACKS



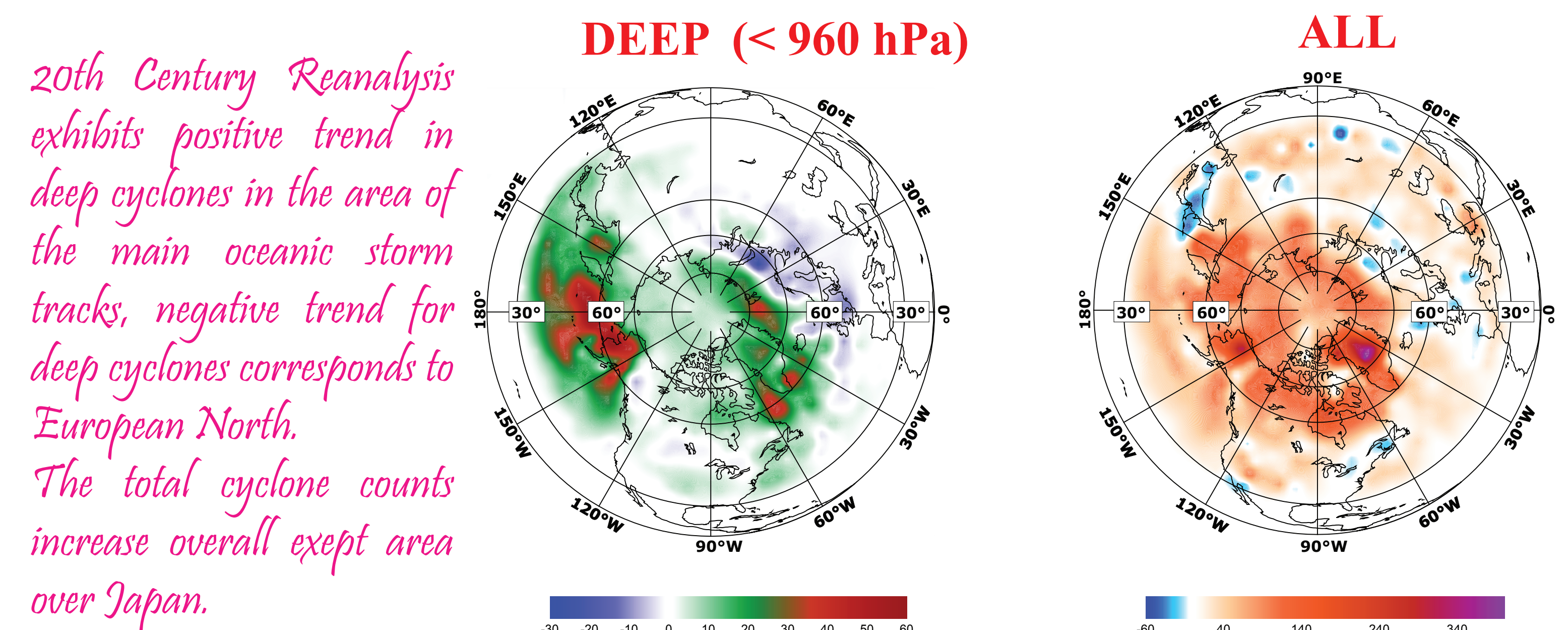
3. PROBABILITY DISTRIBUTION FUNCTION OF CYCLONE LIFECYCLE CHARACTERISTICS



2. 20th CENTURY REANALYSIS VS MERRA



4. 20th Century Rean LINEAR TREND IN NUMBER OF CYCLONE/100 YR



5. REANALYSIS TO REANALYSIS VARIATIONS

