

Southern Plains Drought Early Warning System

Texas and Oklahoma Climate Extremes Workshop

Fort Worth, TX
October 13, 2015

Courtney Black
Regional Drought Information Coordinator
NOAA/NIDIS
Boulder, CO



History of the National Integrated Drought Information System (NIDIS)

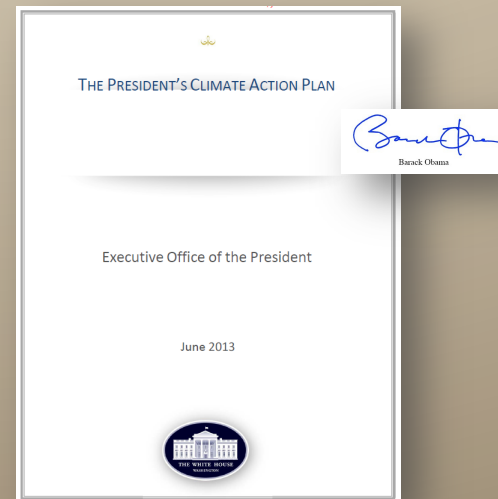
Authorized in 2006

- **Why:**
 - Recognition that better informed and more timely drought-related decisions lead to reduced impacts and costs.
 - **Goal:** “Enable the Nation to move from a reactive to a more proactive approach to managing drought risks and impacts” PL 109-403



Reauthorized in 2014

- Authorizes the appropriation of funds (via NOAA) through FY2018
- Builds off the President’s Climate Action Plan



What is NIDIS?

- Brings drought information, research, education, policy and networking together
- NOAA program that operates on an inter-agency level



NIDIS Goals

- Monitor, forecast, plan for and cope with the impacts of drought
- Support drought research- including indicators, risk assessment and resilience
- Develop educational resources, interactive systems, and tools to promote sound decision making, drought awareness, and response



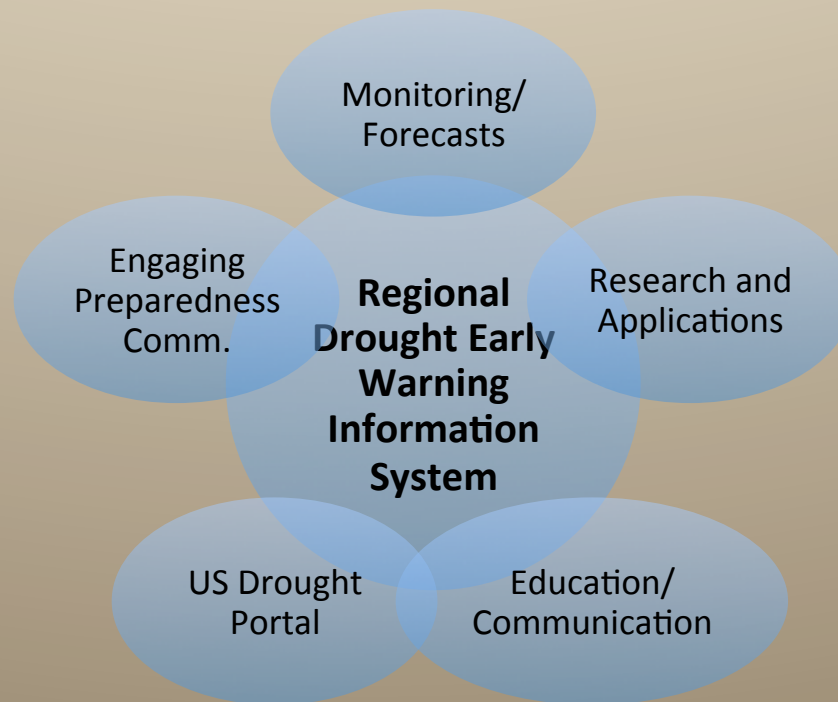
How? Development of Early Drought Warning Systems



What is Drought Early Warning?

1. **International Strategy for Disaster Reduction:** “Provision of timely and effective information, through identified institutions, that allows individuals exposed to a hazard to take action to avoid or reduce their risk and prepare for effective response”
2. Working with communities and existing networks to build capacity for better decision making for drought planning and mitigation

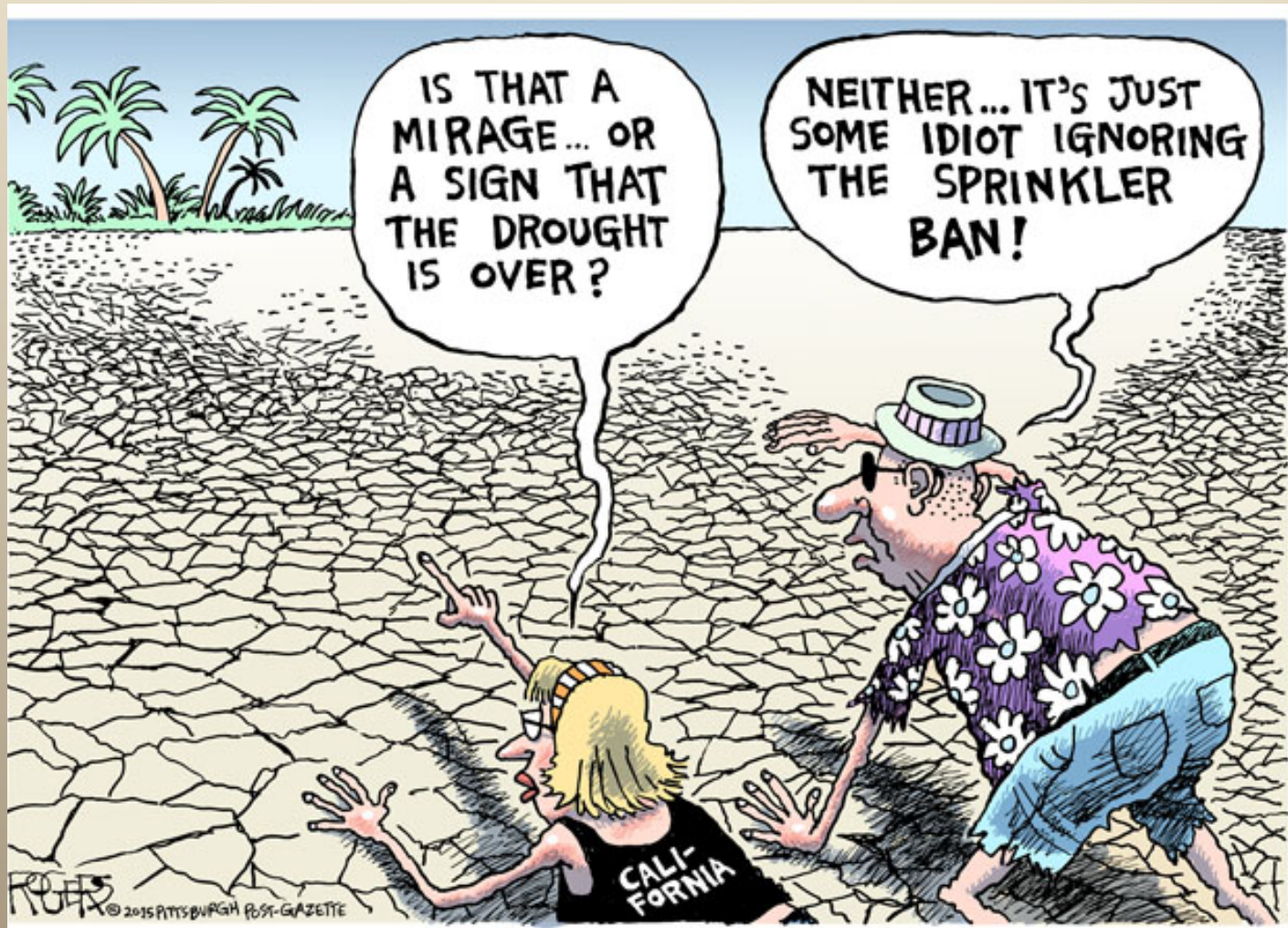
3.



This is what we want to avoid!



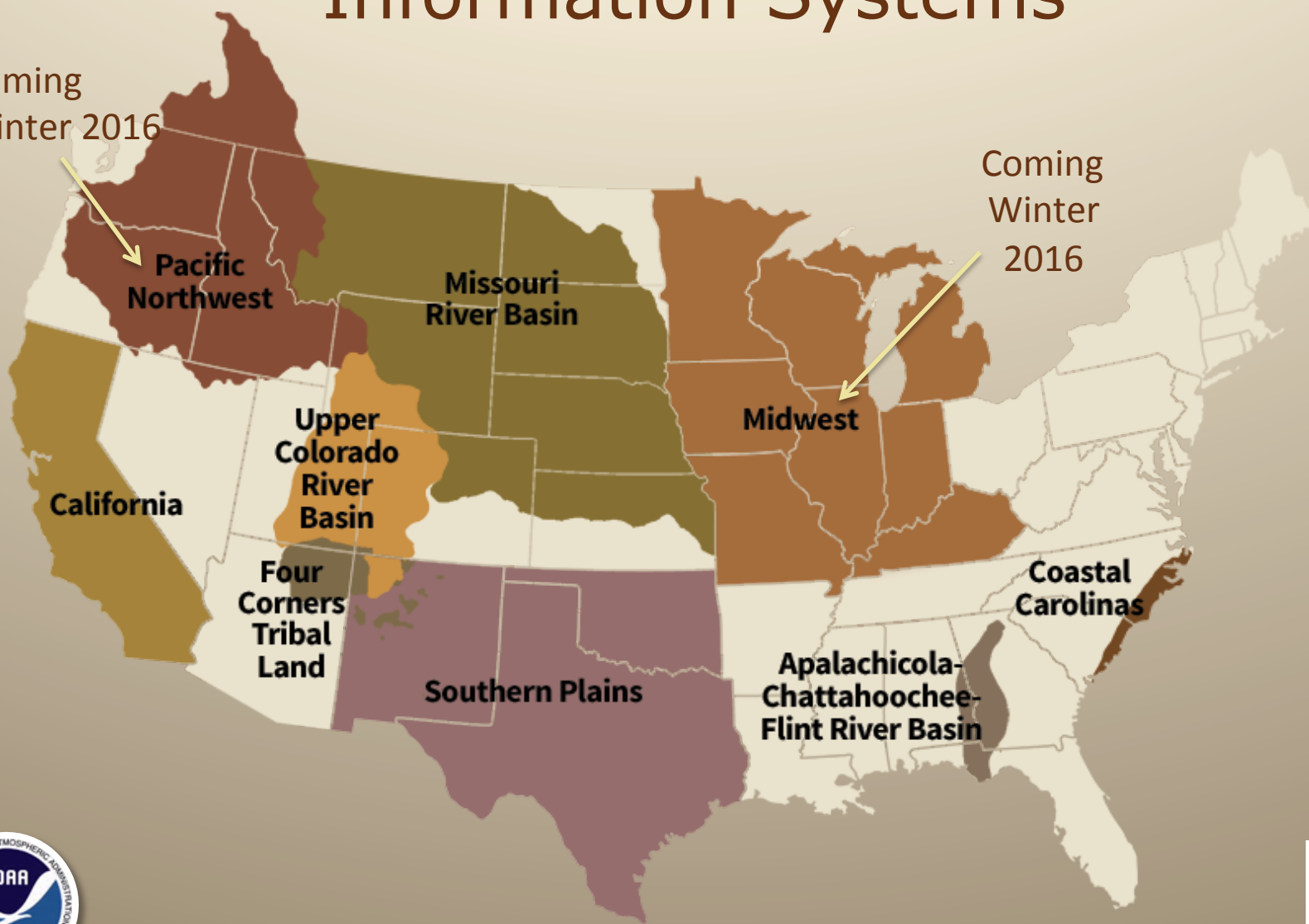
Droughts end with precipitation...



NIDIS Regional Drought Early Warning Information Systems

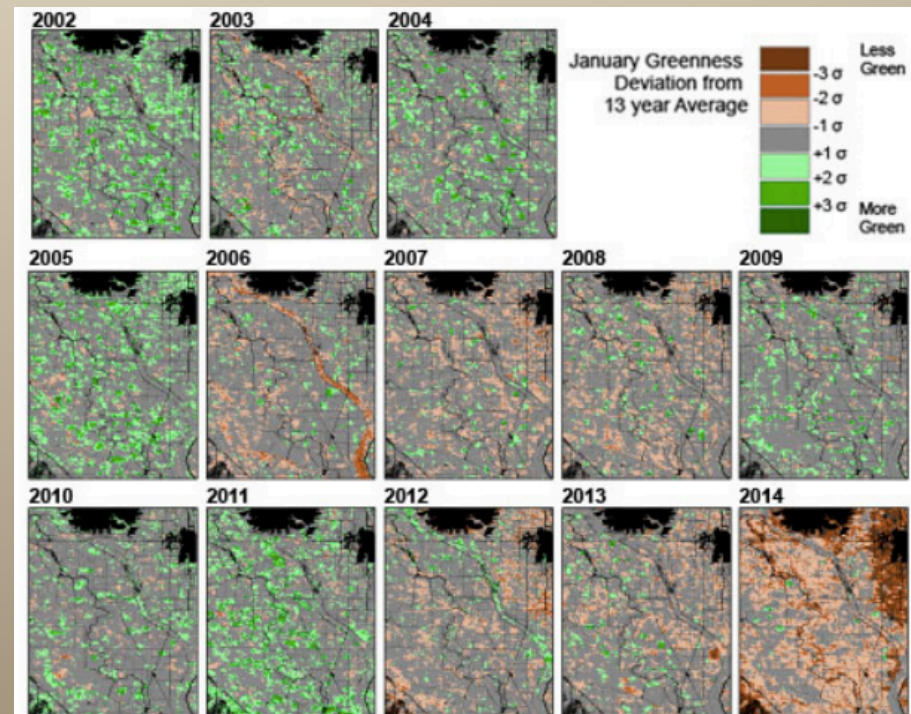
Coming
Winter 2016

Coming
Winter
2016



DEWS Activities in Other Regions

- Upper Colorado River Basin – 2009
 - Snowpack monitoring workshops in CO, UT and WY
 - Monthly/biweekly webinars
- Apalachicola-Chattahoochi-Flint (ACF) Basin – 2009
 - Series of sub-regional workshops and one basin-wide workshop
 - Monthly webinar series
- California – 2010/2011
 - Drought/ENSO outlooks and outreach
 - Sub-regional focus on research and activities

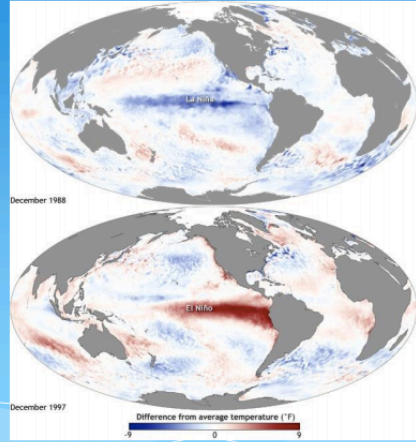


DEWS Activities in Other Regions

- Coastal Carolinas – 2012
 - CoCoRaHS Citizen Science Conditions Monitoring project
 - Coastal Drought Index
- Missouri River Basin – 2014
 - Tribal capacity building for drought plans, vulnerability assessment, leveraging federal resources
 - Monthly webinar series

Upper Missouri Basin Climate/Drought Early Warning Webinar: El Niño

Dr. Dennis Todey
State Climatologist
South Dakota State Univ.
dennis.todey@sdstate.edu
605-688-5678



NIDIS




Photo taken Feb. 10, 1998

Sea Surface Temperatures – 1988 La Niña and 1998 El Niño

Contact Information

Courtney Black

Regional Drought Information Coordinator

NOAA/NIDIS

courtney.black@noaa.gov

303-497-6447