



S2S Workshop: Metrics, Post-processing & Products

User Needs: U.S. National Ice Center



USN



USCG

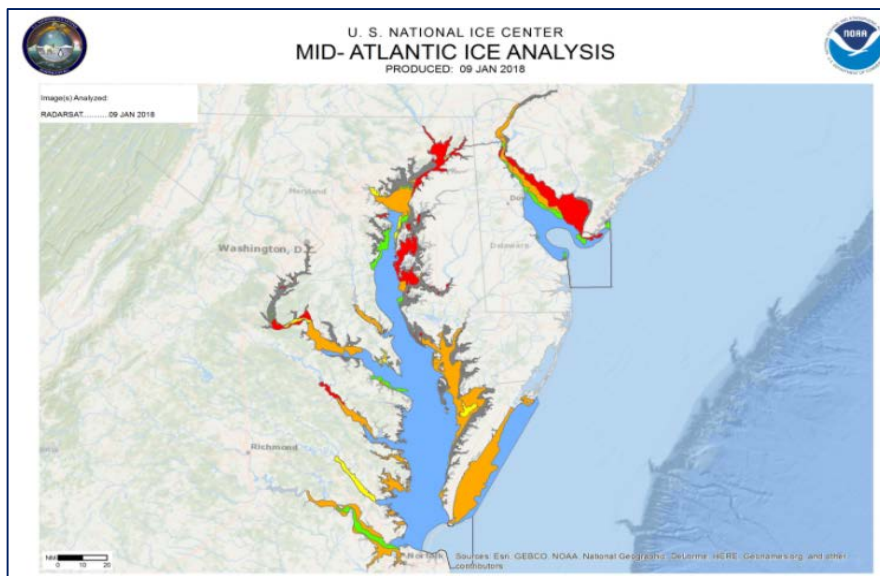
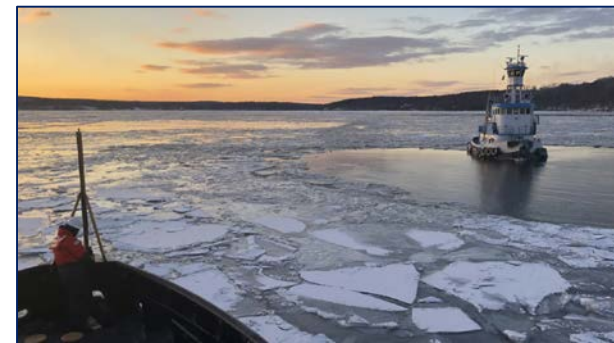


NOAA

CDR Ruth Lane, USN
Director, U.S. National Ice Center
28 February, 2018



Ice Impacts to Public, Commercial Activities Marine Safety

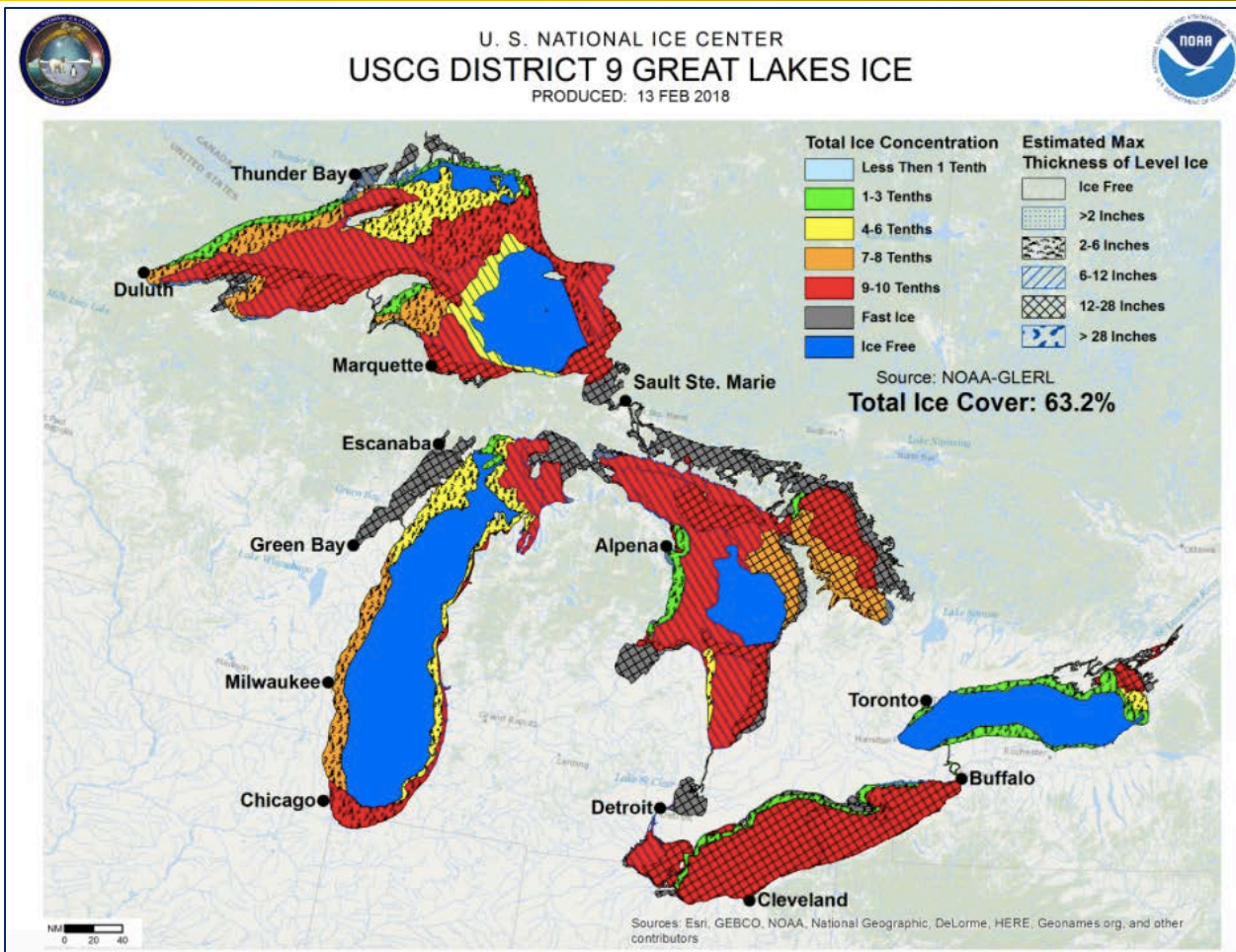


US National Ice Center products inform US Coast Guard waterways warnings for fishing, shipping, and transportation vessels



Ice Impacts to Coast Guard Operations

Ice Breaker Asset Management



USCG District NINE uses US National Ice Center charts to optimize asset management, facilitating \$1B+ in Great Lakes cargo



Ice Impacts to Naval Operations Maneuver Room & Voyage Planning



 **USS Little Rock - LCS 9** divvied USS Little Rock Blue Crew
- Warhawgs's scrawlin'.
Januarrry 25 roundabouts 3:38in the evenin' · 🌐



USS Little Rock Blue Crew - Warhawgs
Januarrry 25 roundabouts 10:00in the mornin' · ✨

👍 Arr!

Recently conducted a berth shift here at the Port of Montreal – we are staying warm, working hard and building partnerships.

*Short-term, sub-seasonal and seasonal forecasts
optimize sea room and voyage planning*



Questions & Comments



Command Duty Officer

nic.cdo@noaa.gov

nic.cdo@navy.smil.mil

Watch floor: (301) 817-3975

Cell phone: (301) 943-6077

www.natice.noaa.gov

www.facebook.com/nationalnavalicecenter