



The Role of NIDIS in Drought and Health



Joel Lisonbee
National Integrated Drought Information System (NIDIS)

Drought and Human Health Workshop
February 26-27, 2020

Overview

- What is NIDIS?
- What is a Drought Early Warning System (DEWS)?
- NIDIS's interest and involvement in health





What is NIDIS?

- First authorized by Congress in 2006, and reauthorized in 2014 and 2018.
- Interagency mandate to develop and provide a **national drought early warning information system**.
- Enable the Nation to move **from a reactive to a more proactive** approach to managing drought risks and impacts.
- Authorizes NIDIS to engage in partnerships with federal, state, tribal, and local partners, as well as the private sector, academic institutions, and citizen scientists

APPROACH

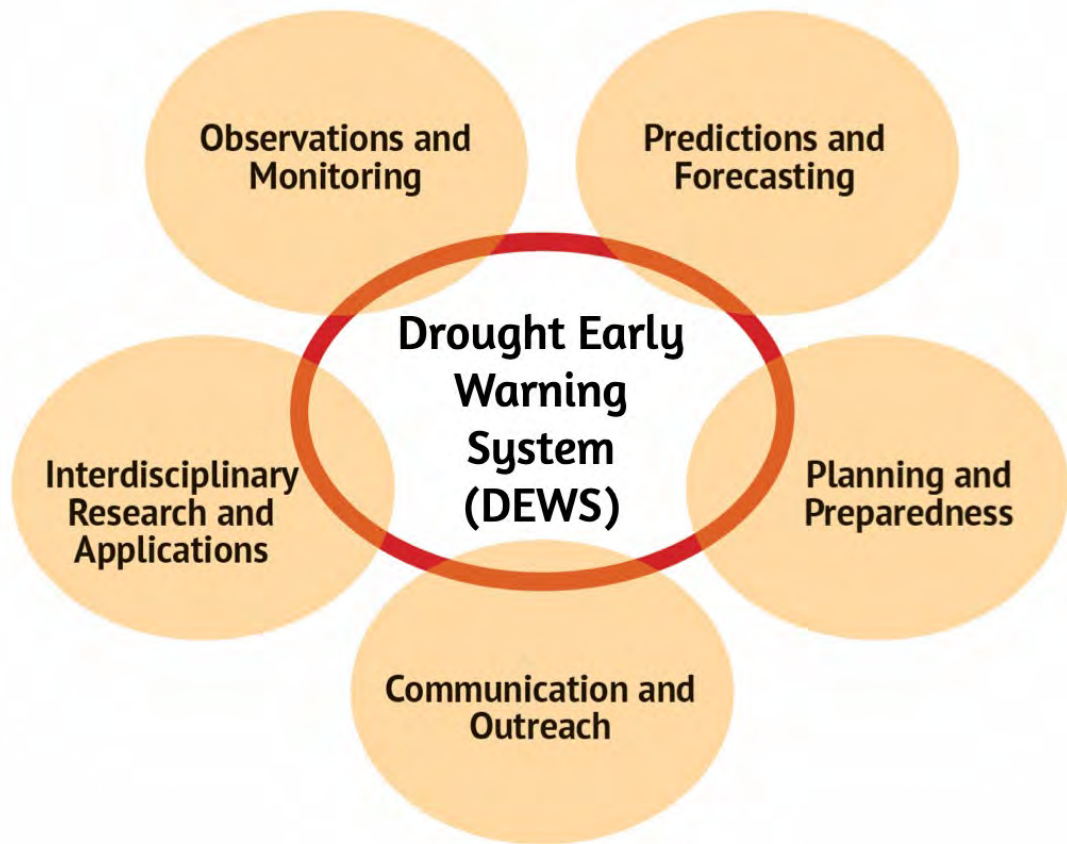
Drought Early Warning

“A system that collects and integrates information on the key indicators of drought in order to make usable, reliable, and timely drought forecasts and assessments of drought...

...and communicates drought forecasts, conditions, and impacts on an ongoing basis to decision makers, the private sector, and the public.”

NIDIS Public Law

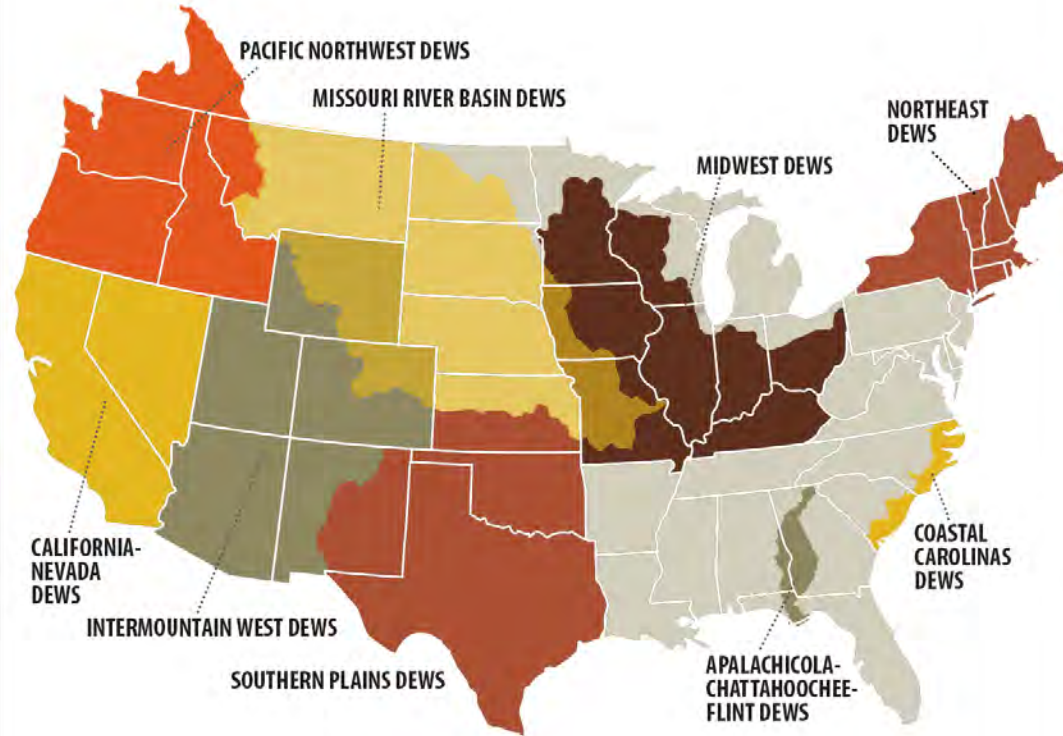
109-430



REGIONS

Drought Early Warning Systems

A Drought Early Warning System (DEWS) utilizes new and existing networks of federal, tribal, state, local and academic partners to make climate and drought science accessible and useful for decision makers.



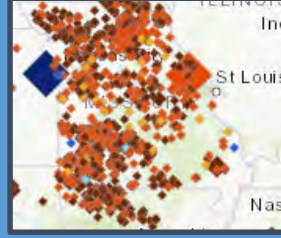
Strategize Effective Ways to Approach Complex Topics Across Regions



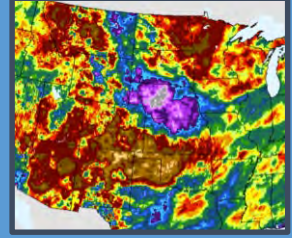
Drought & Public Health



Drought and Wildfire



Drought Impact Reporting and Analysis

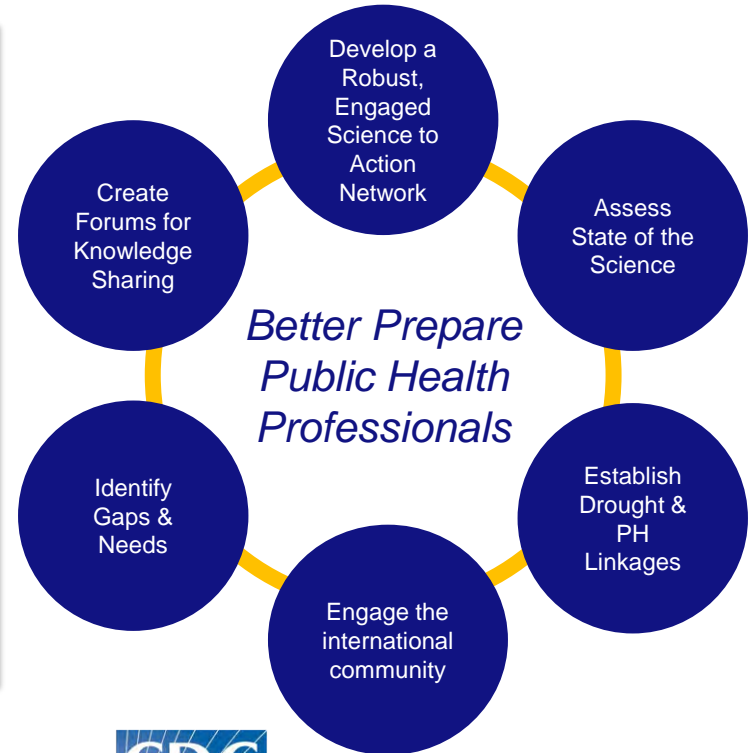


Drought Indicators and Triggers

Drought & Public Health Linkages

2018-2020 Activities:

- Formed a National Drought & Public Health Working Group
- Held a 2019 Public Health Summit (**June 2019**)
- Host a series of Regional Drought & Public Health Workshops
- Support research & communication of linkages
- Create a public health sector page on drought.gov
- **2020 NIDIS Drought & Public Health Strategy**



June 17-19, 2019 | Atlanta, GA

National Drought & Public Health Summit

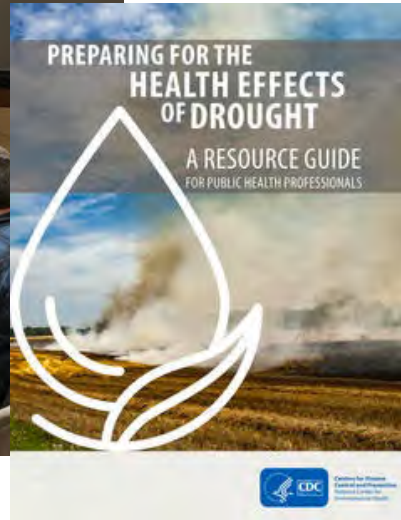
- Discuss ways to better prepare our public health agencies and organizations for the health hazards associated with drought
- **54** attendees from local, state, federal, tribal, non-profit, and academic partners
- Example Key Priority Actions:
 - Technical meeting on public health and drought indicators
 - Research needs, e.g., human health costs of drought; mental health impacts of drought
 - Communication materials
 - Integration of the public health sector into the regional NIDIS DEWS



<https://www.drought.gov/drought/calendar/events/national-drought-public-health-summit>

REGIONAL DROUGHT & PUBLIC HEALTH WORKSHOPS:

Preparing for the Health Effects of Drought



- Build on Summit Outcomes, Share Information, Connect Drought and Health Communities
- Tailored around regional drought-related public health impacts
- 6 workshops from 2019-2021



U.S. Drought Portal (Drought.gov) Redesign

- Improved site navigation
- Sector specific information
- Localized information
- Highlight drought research

The screenshot shows the top navigation bar of the Drought.gov website. It includes the DDM and NIDIS logos, the text "National Integrated Drought Information System", and a search bar with social media icons. Below the navigation bar are dropdown menus for "Data and Maps", "By Sector", "By Location", "Research", and "About", along with a "News + Events" button. The main content area features a "BY SECTOR" section for "Public Health". A text block explains that drought has health implications such as increased illness, mental health impacts, and compromised drinking water. A "Drought in your area? Report Impacts" button is visible. A "On this page" sidebar lists "Health and Drought Conditions", "Key Issues", "Background", and "Explore Drought in this Sector Data & Maps".

This screenshot displays a report titled "Public Health and Drought Conditions | July 9, 2019". It features a "Social Vulnerability" section with a text description and a "Heat Index" section with a text description. A large map of the United States shows drought-affected areas in yellow and orange. Below the map are four data points: "19% of counties in drought that also have high Social Vulnerability risk", "37 counties with Weather Service Heat Warnings", "2 counties with active wildfires and air quality risks", and "53 heat-related hospital visits since January 1, 2019". A "View more public health maps" button is also present. The bottom section, "Key Issues", includes "Air Quality" (discussing increased wildfire and dust storm risks) and "Increased Incidence of Illness and Disease" (discussing fungal reproduction in drier conditions). A "Mental Health Impacts" section discusses the link between drought and mood disorders, domestic violence, and suicide.

Thank You!

joel.lisonbee@noaa.gov



@DroughtGov

