



## Abstract

Sea-surface temperature is an Essential Climate Variable. The radiative impact of mineral dust is one of the major contributors to inaccuracies in the satellite-retrieved sea-surface skin temperature ( $SST_{skin}$ ). Different aerosol dust vertical distributions have varying effects on the satellite-derived  $SST_{skin}$ . To further investigate the physical mechanisms of aerosol effects on Terra MODerate-resolution Imaging Spectroradiometers (MODIS) derived  $SST_{skin}$ , the aerosol radiative effects were studied with a field-data match-up analysis and radiative transfer simulations. The field data are measurements of the  $SST_{skin}$  derived from highly accurate ship-based infrared spectrometers vertical atmospheric temperature and water vapor radiosonde profiles. The aerosol dust concentrations in three-dimensions from the NASA Modern-Era Retrospective analysis for Research and Applications, Version 2 have been used as input to radiative transfer simulations. Based on the analysis of field data and simulations, we have empirically determined that the sensitivity of the Terra MODIS retrieved  $SST_{skin}$  accuracies is related to 1) dust concentration in the atmosphere, 2) the dust layer altitude, and 3) the dust layer temperature. As the aerosol altitude increases, the effect on the  $SST_{skin}$  retrievals becomes more negative in proportion to the temperature contrast with the sea surface.  $SST_{skin}$  differences, satellite-derived - surface measurements, for a given aerosol layer optical depth vary between -3 K and 1 K according to our match-up comparisons and radiative transfer simulations.

## 1. Motivation

- Knowledge of the accuracy of the SST derived from satellite measurements and models is one of the key factors of climate research and prediction.
- The SST accuracy requirements for climate research are very stringent:  $\sim 0.1$  K.
- But high tropospheric aerosol concentrations in the atmosphere significantly increase infrared signal attenuation and prevent the accurate retrieval of SSTs.
- To assess the impact of aerosols we compare SSTs from multiple sources under varying aerosol conditions..

## 2. Data & $SST_{skin}$ Validation

### ► Shipboard SST dataset: M-AERI

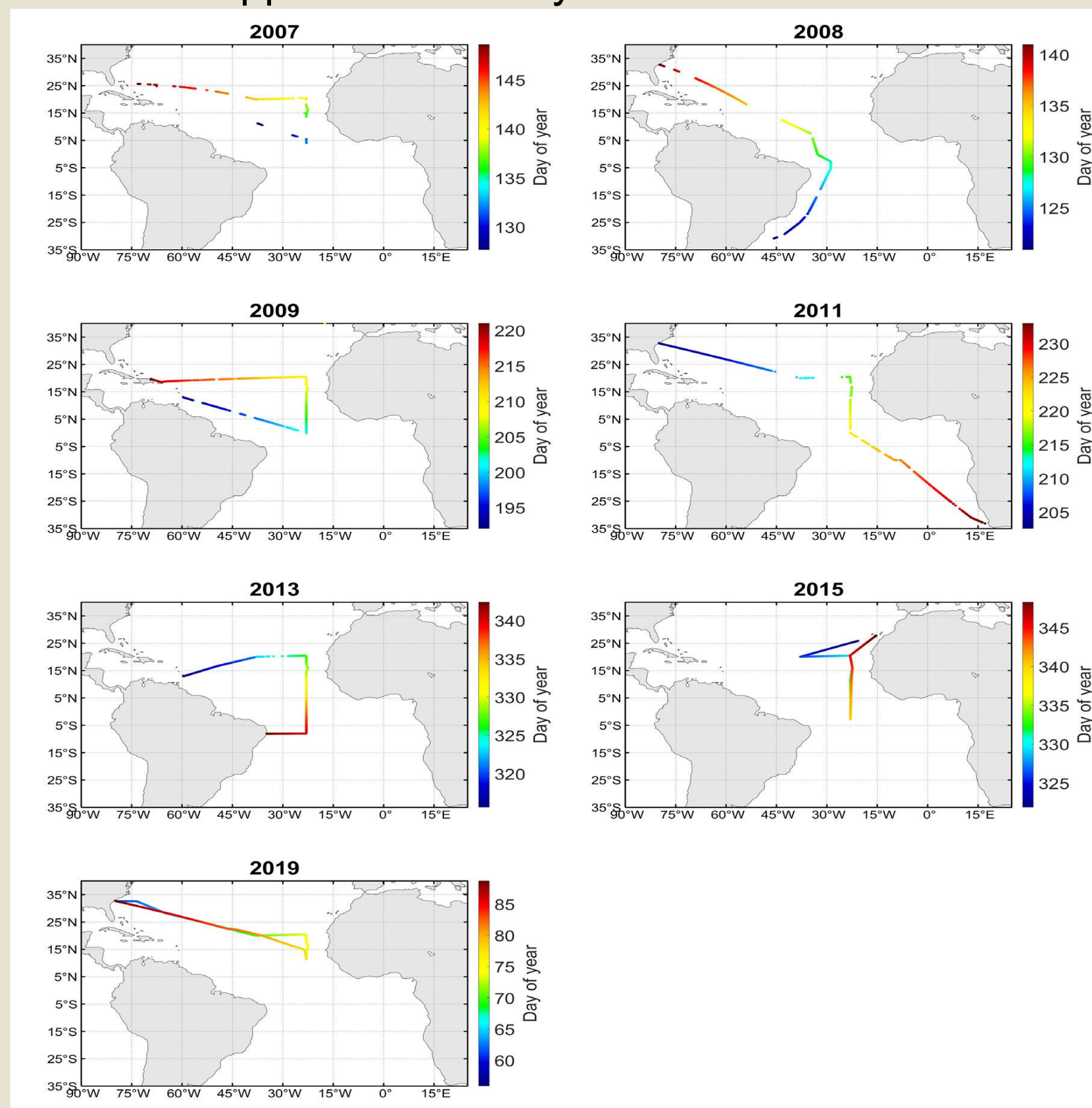
- The M-AERI is an accurate, self-calibrating, Fourier transform IR spectro-radiometer that measures emission spectra from the sea and atmosphere (Minnett et al. 2001).
- RSMAS Match-Up Data Base from NASA SEABASS
- All of the M-AERI and radiosonde data used here are from a series of AERosols and Ocean Science Expeditions (AEROSE) cruises in the tropical and subtropical Atlantic Ocean.

### ► Satellite SST dataset: MODIS TERRA

- Daily L2 SST products from the Long-Term Stewardship and Reanalysis Facility of Group for High Resolution Sea -Surface Temperature (GHRSSST).
- The thermal-infrared  $SST_{skin}$  was retrieved by nonlinear  $SST_{skin}$  algorithms.
- Spatial resolution:  $0.01^\circ$
- Temporal resolution: Twice a day

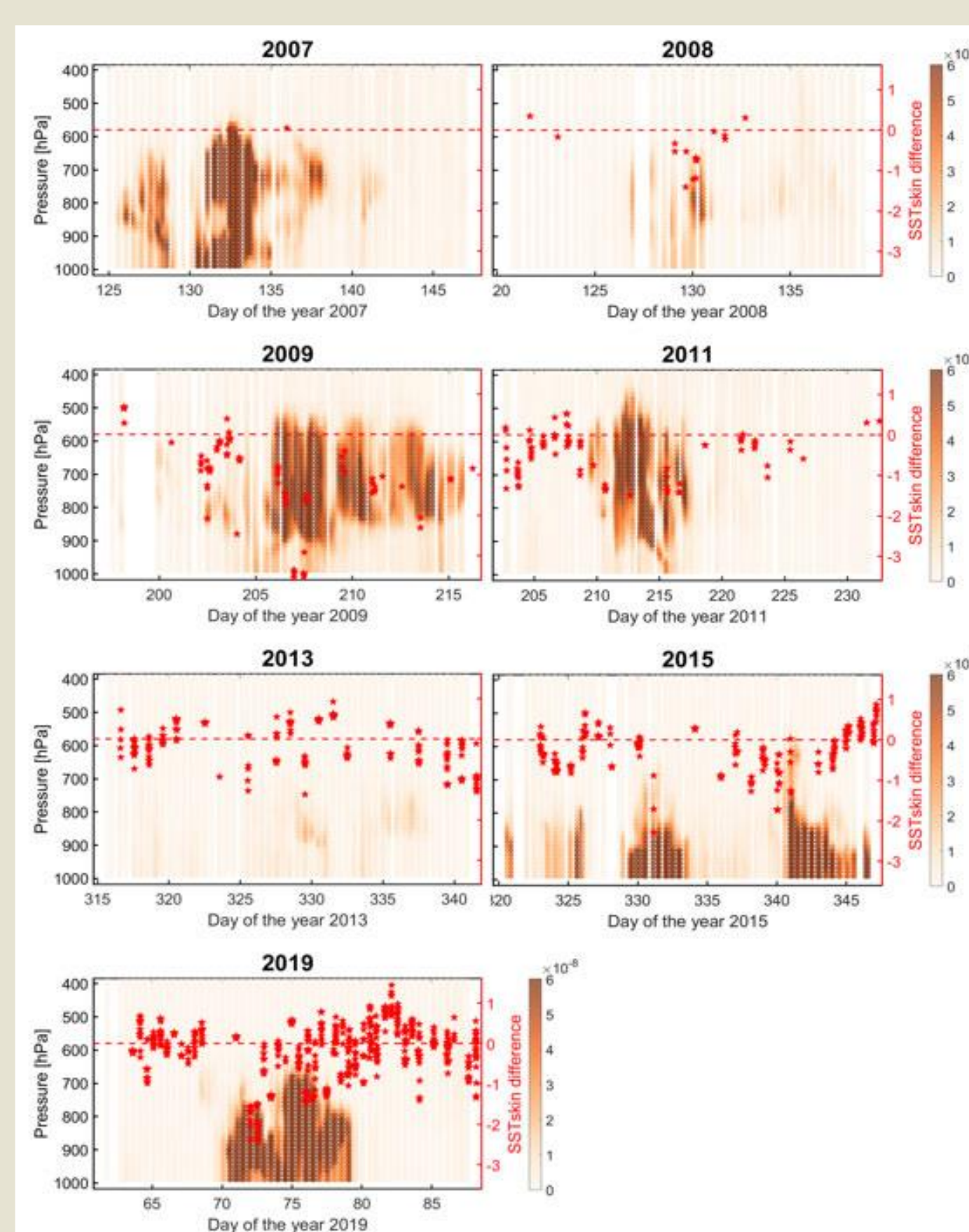
### ► Model simulation dataset: MERRA-2 and RTTOV

- NASA Modern-Era Retrospective analysis for Research and Applications, Version 2 (MERRA-2).
- Radiative Transfer for TOVS (RTTOV) is a fast-radiative transfer model developed by the EUMETSAT NWP Satellite Application Facility.



- Cruise tracks of each AEROSE campaign. The colors indicate the day of year

## 3. $SST_{skin}$ Assessment

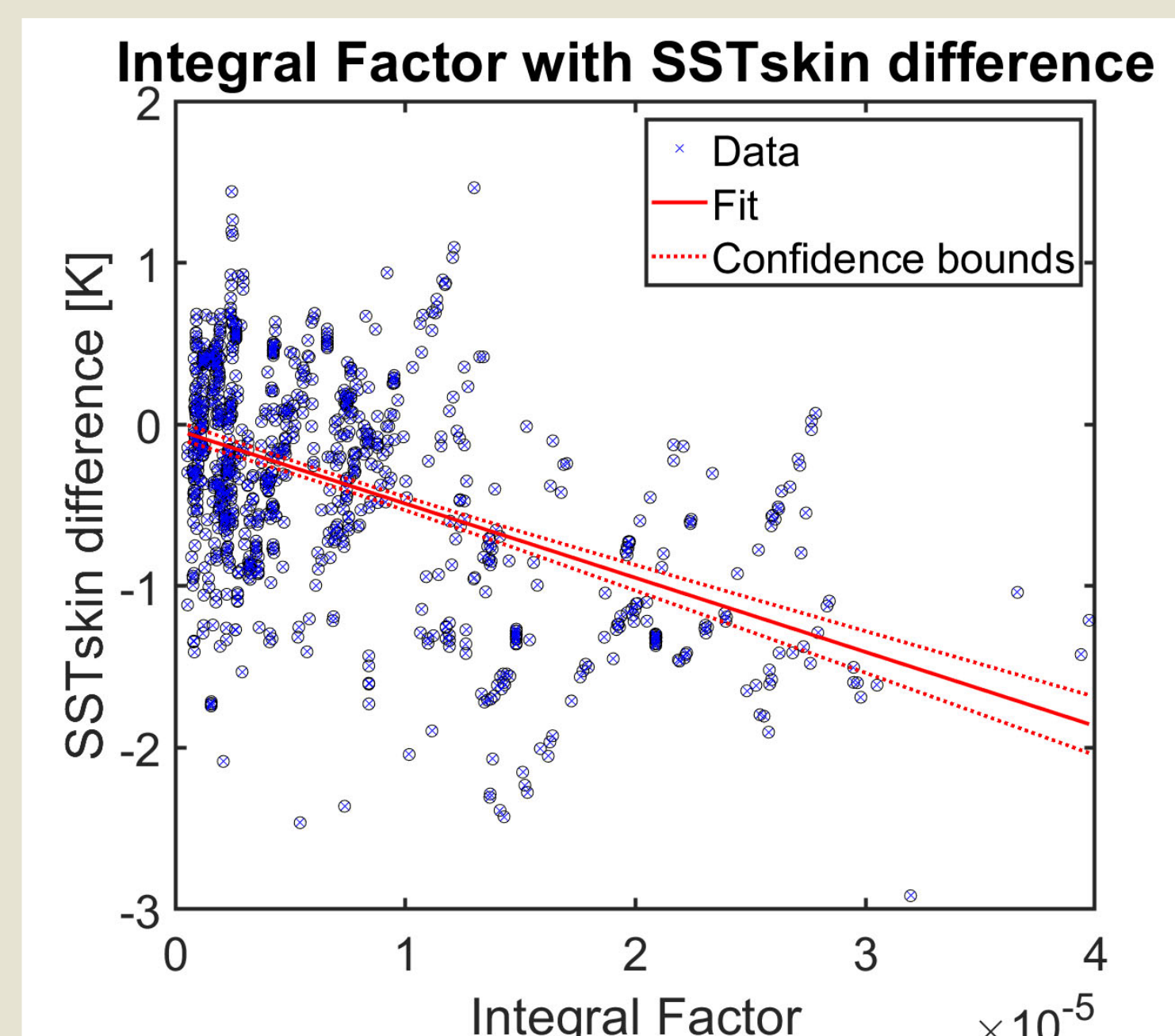


$SST_{skin}$  difference from each of the ship tracks. Red stars indicate the difference with the right y-axis range. The operations of M-AERIs are suspended during rain thus causing some  $SST_{skin}$  data gaps along the track. Comparisons in and close to ports are not used. The background color indicates the dust mixing ratio.

By using the AEROSE match up database, this study revealed the impacts of the dust layer vertical distribution on the MODIS derived  $SST_{skin}$ . The comparison shows that the negative differences are mainly localized in the Saharan dust outflow region. The  $SST_{skin}$  retrieval error is related to the concentrations, altitudes, and temperatures of dust layers. We define the following  $SST_{skin}$  bias factor ( $\Delta SST_{aer-\delta T}$ ) as:

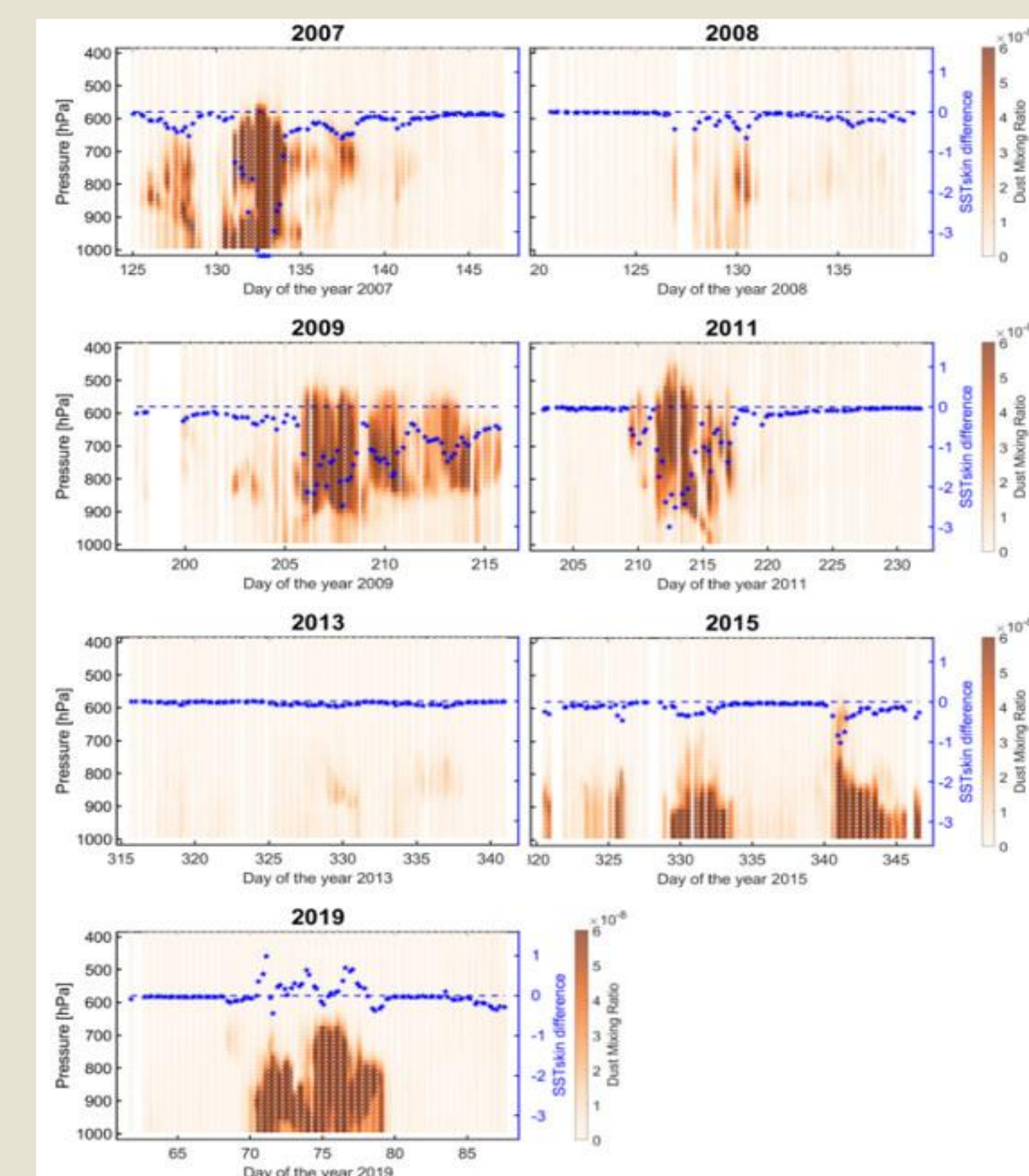
$$\Delta SST_{aer-\delta T} = \sum_{p=400hPa}^{p=surface} \sum_{i=3}^{i=1} (SST_{skin} - T_{air}) \times x_i \times \beta_{ext,i}$$

Where  $x_i$  is each layer's MERRA-2 dust mixing ratio,  $\beta_{ext,i}$  is the sum of scattering and absorption coefficients,  $T_{air}$  is the air temperature of the corresponding layer,  $SST_{skin}$  is the M-AERI measured skin temperature.



The relationship between MODIS  $SST_{skin}$  retrieval bias and  $\Delta SST_{aer-\delta T}$ .

## 4. RTTOV Simulation Assessment



$SST_{skin}$  differences from RTTOV simulations along the cruise tracks. The blue stars indicate the simulated  $SST_{skin}$  error caused by the aerosol according to the y-axis scale at right.

The results show that the negative  $SST_{skin}$  difference can be marked when the ship entered significant, large-scale Saharan dust outflow regions. The uncertainties are also related to the dust layer thickness and altitude.

## 5. Summary

- $SST_{skin}$  differences vary between -3 K and 1 K according to our match-up comparisons and radiative transfer simulations.
- MODIS retrieved  $SST_{skin}$  accuracies is related to:
  - 1) dust concentration in the atmosphere
  - 2) the dust layer altitude,
  - 3) the dust layer temperature.
- As the aerosol altitude increases, the effect on the  $SST_{skin}$  retrievals becomes more negative in proportion to its temperature contrast to the sea surface.

## 7. Affiliations & Acknowledgement

- 1: Department of Ocean Sciences, RSMAS, University of Miami. Email: LBK@rsmas.miami.edu
- 2: IMSG, Inc. at National Oceanic and Atmospheric Administration (NOAA) NESDIS/STAR

This study was funded by Future Investigators in NASA Earth and Space Science and Technology (FINESST) Program grant 80NSSC19K1326. AEROSE is a collaboration with the NOAA PIRATA Northeast Extension (PNE) project and is supported by the NOAA Center for Atmospheric Sciences and Meteorology (NCAS-M) at Howard University (Prof. Vernon Morris, PI), the NOAA grant NA17AE1625, NA17AE1623, the Joint Polar Satellite System (JPSS) and NOAA/NESDIS/STAR. The at-sea support of Malgorzata Szczodrak, Miguel Izaguirre and the Officers, crew, and colleagues on the NOAA Ship Ronald H Brown and R/V Alliance are thanked for hosting M-AERI and other in situ instruments.

## 8. References

- Nalli, Nicholas R., et al. "Multiyear observations of the tropical Atlantic atmosphere: Multidisciplinary applications of the NOAA Aerosols and Ocean Science Expeditions." *Bulletin of the American Meteorological Society* 92.6 (2011): 765-789.
- Minnett, P. J., et al. "The marine-atmospheric emitted radiance interferometer: A high-accuracy, seagoing infrared spectroradiometer." *Journal of Atmospheric and Oceanic Technology* 18.6 (2001): 994-1013.
- Luo, Bingkun, et al. "Infrared satellite-derived sea surface skin temperature sensitivity to aerosol vertical distribution—Field data analysis and model simulations." *Remote Sensing of Environment* 252 (2021): 112151.
- Merchant, C. J., et al. "Saharan dust in nighttime thermal imagery: Detection and reduction of related biases in retrieved sea surface temperature." *Remote Sensing of Environment* 104.1 (2006): 15-30.